



# THE GENERAL DISPATCH

DOUGLAS MACARTHUR ELEMENTARY SCHOOL

454 EAST STOP 11 ROAD

INDIANAPOLIS, INDIANA 46227

[www.perryschools.org/dm/](http://www.perryschools.org/dm/)

**"BUILDING HEARTS AND MINDS"**

"Engagement of Students is our Priority"

# WeGrowKids

Bethany Gibson, Principal  
Kyle Scaringe, Assistant Principal  
February 2, 2024

Phone 317-789-2500  
Fax 317-865-2679  
Bulletin 20

## REMINDERS AND NOTES

Feb. 19th—President's Day  
No School

PHONE NUMBERS!!!!

MAIN NUMBER 789-2500

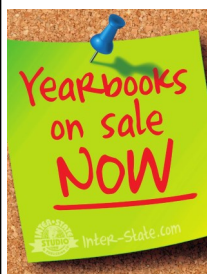
CAFETERIA 789-2545

ATTENDANCE 789-2502

TRANSPORTATION 789-6220

## \*MACARTHUR NEWS\*

YEARBOOKS are on sale NOW!



Forms should have come home this week. Cost is \$19 for a regular yearbook, or \$23 for one with your child's name and picture on the front cover.

There are two ways to order. You may send cash or check (DMES) to school with the order form, or to order on-line, visit:

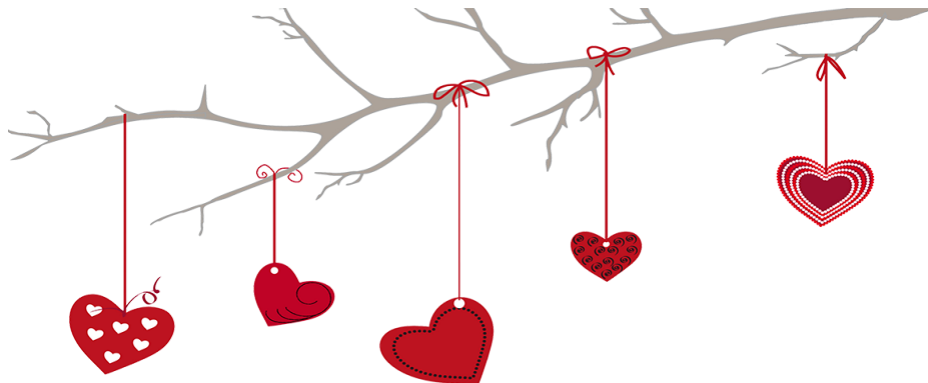
[www.inter-state.com/order](http://www.inter-state.com/order) and enter code **83265W**. Don't forget to order a yearbook! Deadline to bring in orders for yearbooks is March 15th. Online orders are due March 31st.

## Afternoon Car Rider Procedures

All cars that are picking up students in the afternoon **HAVE** to have and display their child's car rider tag in their front window until after their child is safely in the car. If you have lost your tag, we will be more than happy to print you another one. If you do not have your tag, you will be required to come into the building with photo ID to pick up your child. We can not accept a photo copy or a handwritten number.

Zanlei Mawtaw in, siahngakchia a dong mi nulepa hna, nan fale *car rider tag number (a hring mi catlap, sianginn nih an i pek mi)* kha nan fale mawtaw chung an luh hlan lo, mawtaw thlang hmai ah langh ter peng ding a si lai. Nu le pa, nan car rider number nan thlau ah cun, Sianginn nih a thar an in pek than hna lai.

Nan car rider number nan i put lo ah cun, Sianginn chungah nan lut lai i, nan hmantlak ID lawng he, nan fale nan lak khoh lai. Tial chom mi car rider number Sianginn nih a cohlan lo, cun photocopy zong Sianginn nih an cohlan lo.





## 2024 Edgewood Athletics Baseball/Softball Sign Ups:

We are located on the southside of Indy  
@ 6004 Camden St. Indpls, IN 46227

**We have a league for all age groups.**

**Baseball-** Boys ages 4-13(must be in 8th grade currently)  
PeeWee ages 4-5 \$75 ( these teams are co-ed)  
Rookie League-age 6 \$110  
Astro League ages 7-8 \$145  
Minor League ages 9-10 \$145  
Major League ages 11-13 \$145

**Softball-** Girls ages 4-11  
PeeWee ages 4-5 \$75 ( these teams are co-ed)  
Cadet League ages 6-8 \$145  
Junior League ages 9-10 \$145  
Senior League ages 11-14 \$145

Website: <https://www.edgewoodathletics.org>

Upper Right hand corner click on Register and create an account.

Deadline to register is Feb 23<sup>RD</sup> . Spots are 1st come 1st served, once a league fills, it will be closed.

Late Registrations will remain open until 1<sup>ST</sup> of March if openings are available

Season begins March 4th-June 22<sup>ND</sup>

Any Questions please email: [edgewoodathletic@gmail.com](mailto:edgewoodathletic@gmail.com)



# **Falcon Youth Sports**

## Winter 2024

Dear Parents,

Below you will find opportunities for your child to participate in various athletic activities being offered throughout Perry and in the community. Please reach out if you have any questions!

**Scott Simmonds**

**ssimmonds@perryschools.org**

**Keira Bush**

**knbush@perryschools.org**

<b>ATTENTION ALL ATHLETES NEW OPPORTUNITIES!</b>	<b>Falcon Athletic Enhancement Camp</b> <ul style="list-style-type: none"><li>• Opportunity for any athlete to work on strength and speed</li><li>• Boys and Girls</li><li>• Grades 4-8</li><li>• 12 evening sessions</li></ul> <a href="#">Information Sheet</a> <a href="#">Registration Link</a> <i>Questions? Contact <a href="mailto:bwcooper@perryschools.org">bwcooper@perryschools.org</a></i>	
<b>Volleyball NEW OPPORTUNITIES!</b>	<b>Perry Township Youth Volleyball</b> <ul style="list-style-type: none"><li>• Registration opens Jan 1</li><li>• 2nd-8th grade boys and girls</li><li>• Season is Feb 19- March 10</li></ul> <a href="#">Registration Link</a> <i>Questions? Contact <a href="mailto:perrytownshipvballinc@yahoo.com">perrytownshipvballinc@yahoo.com</a></i>	
<b>Baseball &amp; Softball NEW OPPORTUNITIES!</b>	<b>Edgewood Athletics</b> <ul style="list-style-type: none"><li>• Registration open for Spring 2024</li><li>• Boys and girls ages 4-10</li><li>• Registration closes February 20, 2024</li></ul> <a href="#">Information Sheet</a> <a href="#">Registration Link</a>	

<b>Wrestling</b>	<b>Perry Meridian Wrestling Club</b> <ul style="list-style-type: none"> <li>• Grades K-6</li> <li>• Starts October 23</li> <li>• Two practices a week; weekend tourneys</li> </ul> <a href="#">Information and Registration Link</a> <i>Questions? Contact <a href="mailto:cdpayton@perryschools.org">cdpayton@perryschools.org</a></i>	
<b>Hockey</b>	<b>South Indy Youth Hockey</b> <ul style="list-style-type: none"> <li>• Ages 6-14</li> <li>• Ongoing registration for the Team</li> </ul> <a href="#">Information and Registration Link</a>  LEARN TO SKATE AT PERRY PARK ( <a href="#">click here</a> )	
<b>Tennis</b>	<b>National Junior Tennis League</b> <ul style="list-style-type: none"> <li>• Ages 5-18</li> <li>• Multiple indoor leagues &amp; clinics</li> </ul> <a href="#">Information and Registration Link</a>	
<b>Join Falcon Youth Sports</b>	<b><u>Mailing List</u></b> Receive emails directly to your inbox about the latest youth sports opportunities in Perry Township. Scan the QR or email <a href="mailto:ssimmonds@perryschools.org">ssimmonds@perryschools.org</a>	
	<b><u>Facebook Page</u></b> Follow us on Facebook to see youth sports opportunities and updates! Scan the QR or search for Falcon Youth Sports	
<div>  <div> <h2><b><u>Falcon Youth Sports</u></b></h2> <p><i>Be part of something</i></p> </div> </div>		





# REGISTER TODAY!



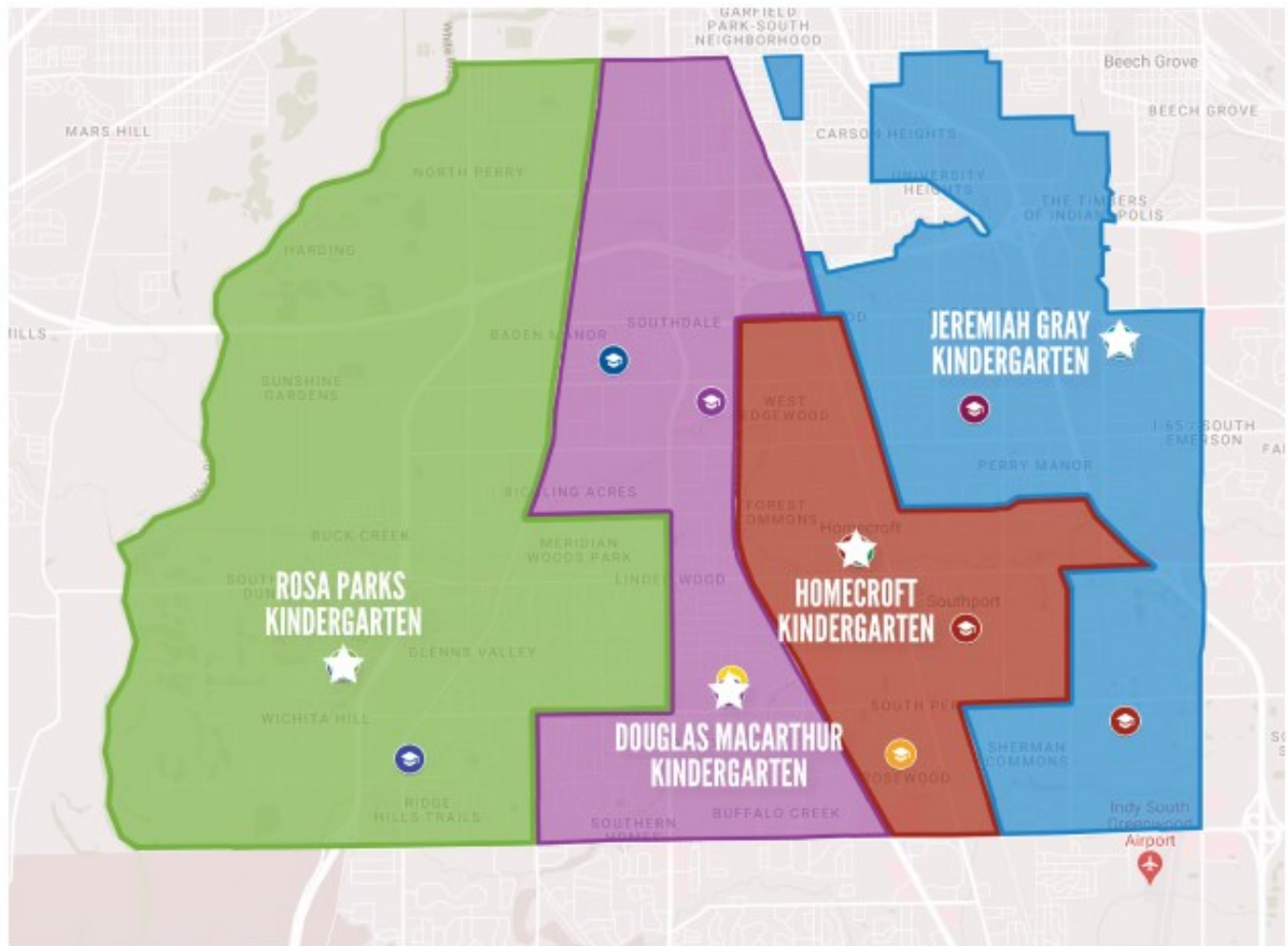
## 2024 Tentative Dates

Registration ends	April 1 <sup>st</sup>
Coaches Meeting	April 14 <sup>th</sup>
Practice Start	April 15 <sup>th</sup>
Opening Day	May 4 <sup>th</sup>
Closing Day	June 22 <sup>nd</sup>

DIVISION	AGE	COST
Tee Ball	4-6	\$100
Rookie/Instructional	6-9	\$125
Minors	8-11	\$175
Majors	10-12	\$175
Juniors/Seniors	13-15	\$175



Kindergarten registration is underway! We are excited to accept registration for your child to attend kindergarten in Perry Township for the 2024-2025 school year. To attend kindergarten next year your child must be five (5) years old by August 1, 2024. After consultation with the building principal, the waiver process allows a child to turn five (5) by September 1, 2024. Please use the information and boundary map below to find your child's designated kindergarten academy for the 2024-2025 school year. Schools are determined by residence only.



### **Homecroft Kindergarten Academy**

1551 E. Southview Drive  
Indianapolis, IN 46227

### **Jeremiah Gray Kindergarten Academy**

5225 Gray Road  
Indianapolis, IN 46237

### **Douglas MacArthur Kindergarten Academy**

454 E. Stop 11 Road  
Indianapolis, IN 46227

### **Rosa Parks Kindergarten Academy**

7525 Wellingshire Blvd.  
Indianapolis, IN 46217

# PERRY MERIDIAN ELEMENTARY WRESTLING CAMP

**NO PRIOR WRESTLING EXPERIENCE  
NEEDED.**

## WHEN

**February 12, 13, 14, from 6-7:15  
pm February 19, 20, 21 from  
6-7:15 pm. On February 22nd,  
Dual Tournament and Awards  
6-8:30pm**

## WHERE

**Perry Meridian High  
School Wrestling Room**

**401 VA Meridian School Road**

**PURPOSE • Learn from current PMHS Wrestlers  
• Be Active • Have Fun • Introduce Techniques  
• Build Team Concept Within Perry Township •  
Continue the PM Wrestling Tradition • Work  
Hard**

**WWW.PERRYMERIDIANWRESTLINGCL  
UB.COM** HAVE QUESTIONS? NEED MORE INFO?

**CONTACT COACH PAYTON:  
GDPAYTON@PERRYSCHOOLS.ORG OR 317-908-4920**

**GRADES K—6**

## SIGN UPS

**February 1st-10th**

**During elementary practice**

**6:15-7:15 PM outside of Perry Meridian Wrestling room.**

**Or sign up online @**

**Perrymeridianwrestlingclub.com**

## COST

**Free to current PMWC members**

**\$50 for 1 wrestler**

**\$95 for 2 wrestlers**

**\$140 for 3 wrestlers**

**Includes—t-shirt, camp participation, and  
award at the tournament**

## EQUIPMENT NEEDED

**Shoes**

**T-shirt**

**Shorts**

## WANT MORE AFTER CAMP? JOIN THE

**WRESTLING CLUB** After camp, you can join the  
Perry Meridian Wrestling Club at a discounted  
rate. Club practices are on Mondays and  
Thursdays 6-7pm.

**Your wrestler will learn Folkstyle, Freestyle  
and Greco wrestling.**



# FALCON ATHLETIC

## ENHANCEMENT CAMP

*To introduce and develop the foundations of strength and speed for our athletes. Create a vertical integration in our strength and speed program from Elementary to High School. To teach and educate proper form and technique to enhance athletic development.*

### **Instructors:**

Nathan Warman - Strength and Development Coordinator

Brett Cooper - Head HS Football Coach

Mason Deal - Assistant Football Coach

Greg Wedow - Assistant Football Coach

### **Ages**

All students in grades 4th, 5th, 6th, 7th and 8th

Both male and female.

### **Where**

Perry Meridian High School Weight Room and Athletic Facilities

(Please Enter Door 1)

### **Times**

Monday/Wednesday (7-8pm)

### **Dates**

(12 Total Sessions) Feb - 5, 7, 12, 14, 19, 21, 26, 28 March - 4, 6, 11, 13

### **Cost**

\$100 per athlete

### **Registration**

[www.pmfalconfootball.com/fyfcregistration](http://www.pmfalconfootball.com/fyfcregistration)

Questions: Brett Cooper: [bwcooper@perryschools.org](mailto:bwcooper@perryschools.org)