



Perry Township Schools

Providing educational opportunities that create a desire for lifelong learning that inspires all students to maximize their academic success

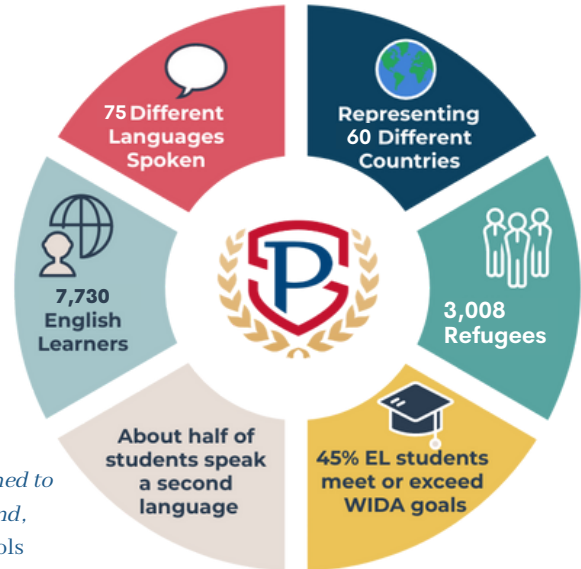


Perry Township Schools serve a high-need student population. We are located just south of Indianapolis, Indiana. Our district has a diverse student population of 16,364 students. We have 17 schools plus four kindergarten academies. Over the past few years, we have had a large influx of refugees, the majority are from Burma, which is now called the "Republic of the Union of Myanmar."

Today, more than 28% of our students are English learner (EL) students, representing the highest percentage in the state of Indiana. Our students eligible for free and reduced lunch have increased from 61 percent to 71 percent today. Even with these obstacles to overcome, we continue to be one of the top academic urban school districts in the state of Indiana.



"Our best practices, developed with NIET, confirm that success is achieved when educators are trained to adapt their teaching methods to reach children, regardless of nationality, socioeconomic background, learning disabilities, and personal challenges." - Pat Mapes, Superintendent, Perry Township Schools



Career Ladder Progression for Perry Township Schools Leadership

Elementary

- (23) of our (26) master teachers started as classroom teachers in Perry Township
- (10) of our (15) assistant principals started as Master Teachers in Perry Township
- (2) of our (15) Principals started as master teachers, then assistant principals in Perry Township
- (3) of our district level directors started as principals in Perry Township

Secondary

- (13) out of (16) started as classroom teachers in Perry Township
- (5) of our (17) assistant principals started as Master Teachers in Perry
- (1) of our district level directors started as a principal in Perry Township



Perry Township Schools

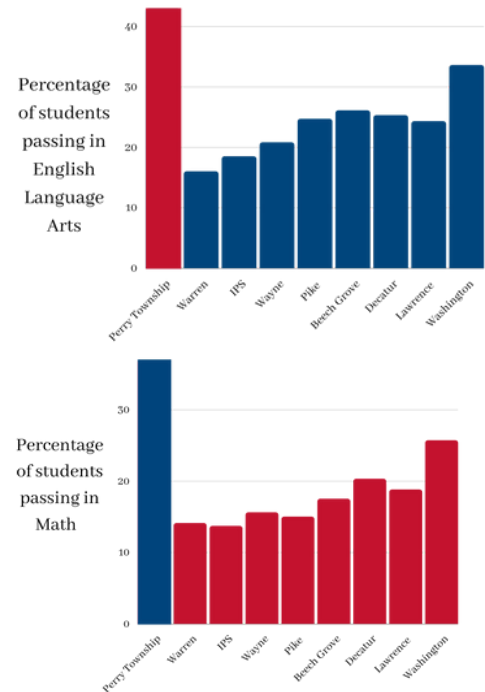
Providing educational opportunities that create a desire for lifelong learning that inspires all students to maximize their academic success

In 2021 during the pandemic year, Perry Township Schools received a 43 percent passing rate in English language arts and a 37 percent passing rate in math on the state-wide I-Learn (Indiana's High Stake's Testing Data) assessment.

Compared to all other Marion County Public Schools with similar free/reduced populations, Perry Township Schools outperformed all other districts in the county.

Most notably, Perry Township Schools, which has a student population (size, free/reduced and EL) similar to Indianapolis Public Schools, and MSD Warren Township scored an average of 25.7 percent higher in English Language Arts and 23 percent higher in math.

2021 I-Learn Data Marion County Public Schools District Data



National Recognition on Achievement Growth and Proficiency

- 2016-17**
 Southport Elementary
 - National Institute for Excellence in Teaching (NIET) Founder's Award
- 2018**
 Perry Township Schools
 - First Recipient of NIET National Award of Excellence in Educator Effectiveness
- 2019**
 Perry Township Schools
 - Title III Distinguished District Award
 - 5 Year Federal Grant for Teacher Development from Teacher and School Leader Incentive Program (TSL)
- Henry Burkhart Elementary
 - National Title I Distinguished School Award
- 2021**
 Douglas MacArthur Elementary
 - NIET Founder's Award



Perry Township administrator Vickie Carpenter shares the district's best practices with the Indiana State Board of Education, members of the Indiana House of Representatives, and other school districts across the state.

